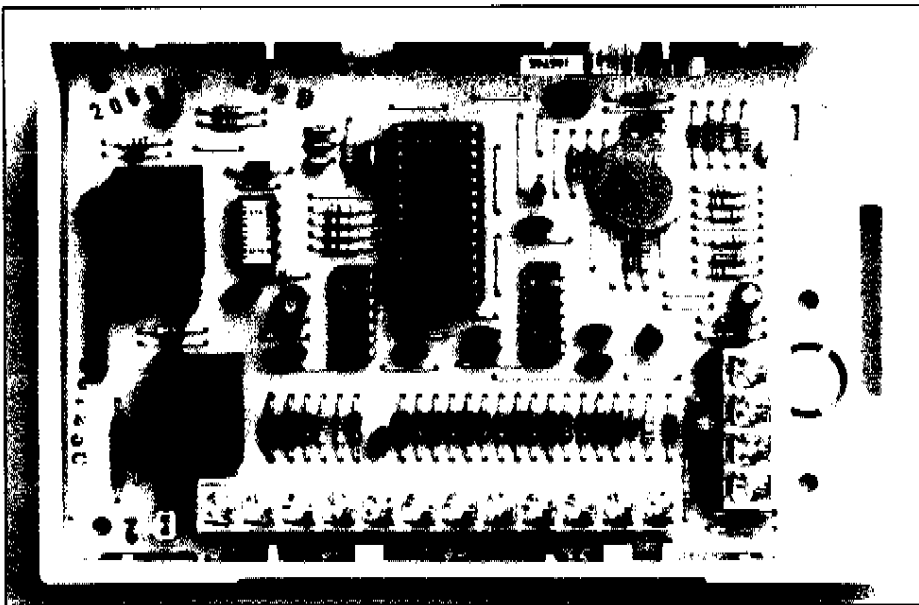


# 4229 Wired Zone Expander/Relay Board **ADEMCO**



- Adds up to 8 hardwired zones and 2 relays
- Easily wired to control panel
- Fits inside Universal Control Cabinet
- Expand existing security systems easily
- Attractive case design
- Check Control Documentation for compatibility with 4229.

## 4229 WIRED ZONE EXPANDER

When your installation requirements call for 8 additional hardwired zones and additional relay outputs, the 4229 is your answer. The 4229 Wired Zone Expander adds up to 8 EOLR supervised zones which are connected to the Control/Communicator via the control's console wiring. In addition, it provides 2 relay outputs which are programmed by the appropriate control for a variety of functions.

## SPECIFICATIONS

### Physical:

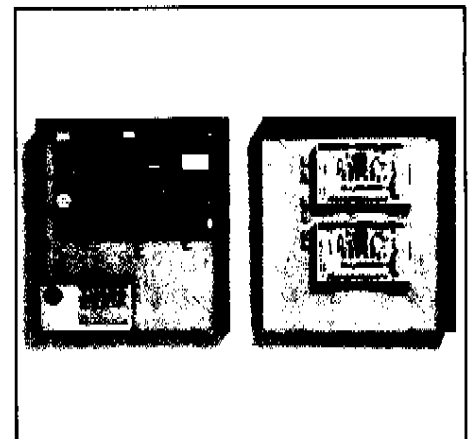
Width: 6-1/2" (169mm)  
Height: 4-1/4" (108mm)  
Depth: 1-1/4" (32mm)

### Electrical

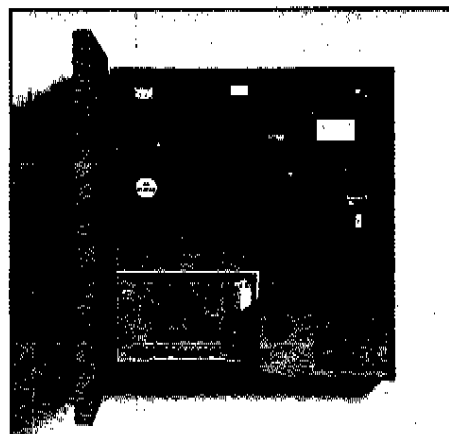
Voltage: 12VDC  
(from control's remote console connection points)  
Current: 35mA no relays energized  
100mA both relays energized

The 4229 is ideal for expanding existing hardwired jobs without changing the control panel. The ability to add both zone expansion and relay outputs offers maximum protection and flexibility with minimal cost.

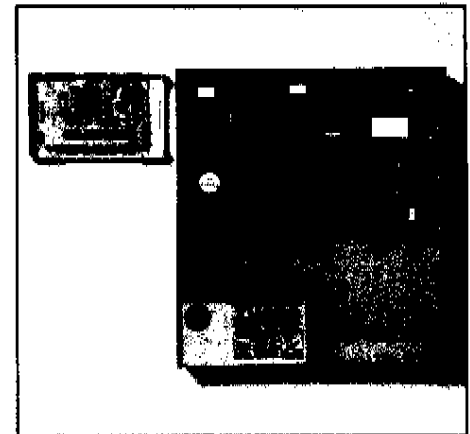
The 4229 is housed in a white plastic case for wall mounting and can be mounted in a Universal Can. If the 4229 is remotely mounted, there are provisions that tamper protect the unit so that it cannot be disconnected from the console wiring without detection by the control.



Multiple 4229's may be located next to the control in another universal can.



Universal Can with 4229 and battery



- Universal Can with console wiring connection to the 4229.
- 4229 may be mounted directly on the wall adjacent and wired to the control panel.

**ADEMCO**

165 Eileen Way • Syosset, NY 11791